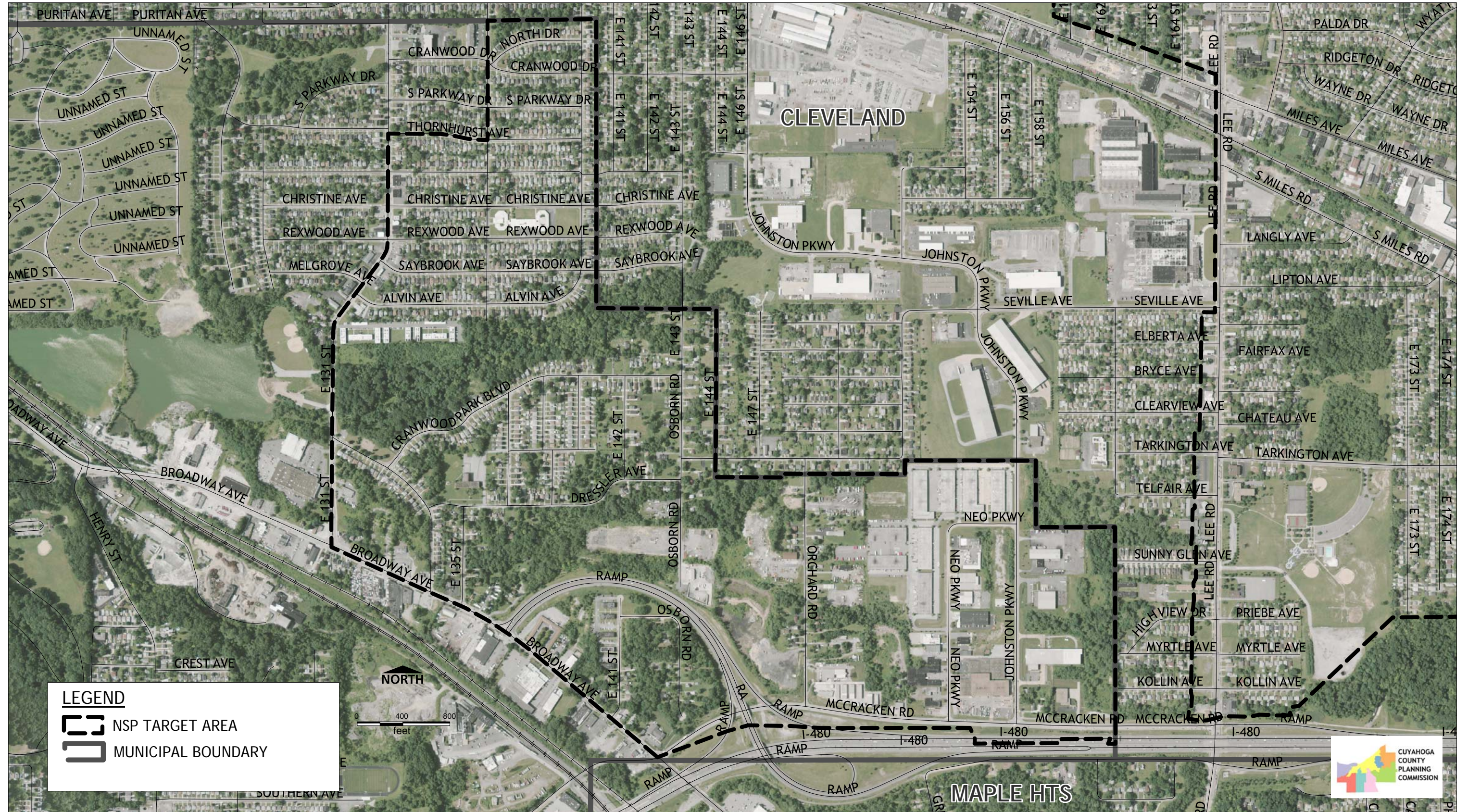


NSP II Target Area: Garfield Heights Tract 1547.00

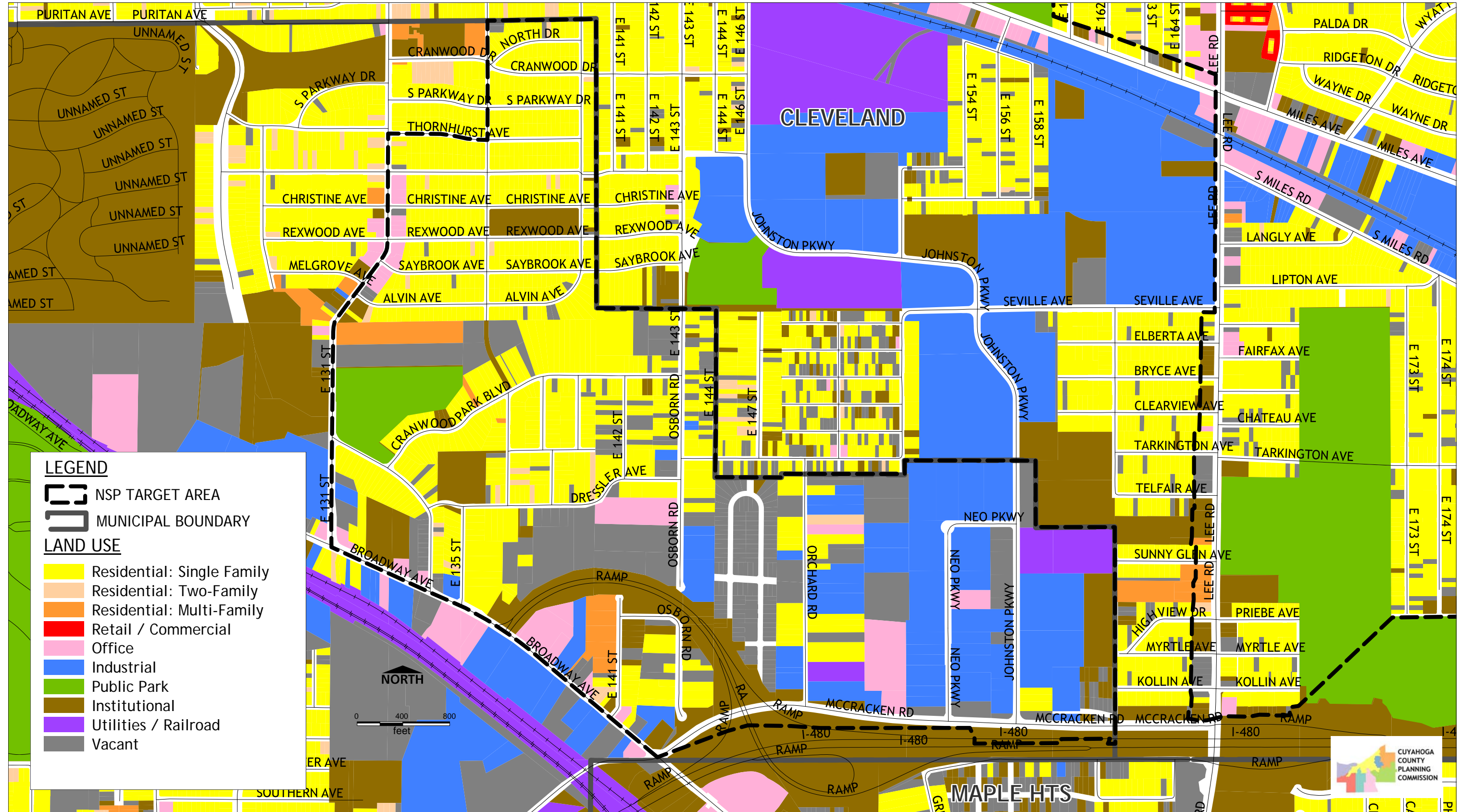
Aerial Photo, 2009



Sources:
Land Use and Zoning: Cuyahoga County Auditor, Appraisal Department, 2009.
Aerial Photo: National Agricultural Imagery Program, 2009
Historic Places: National Park Service, Cuyahoga County Planning Commission.

NSP II Target Area: Garfield Heights Tract 1547.00

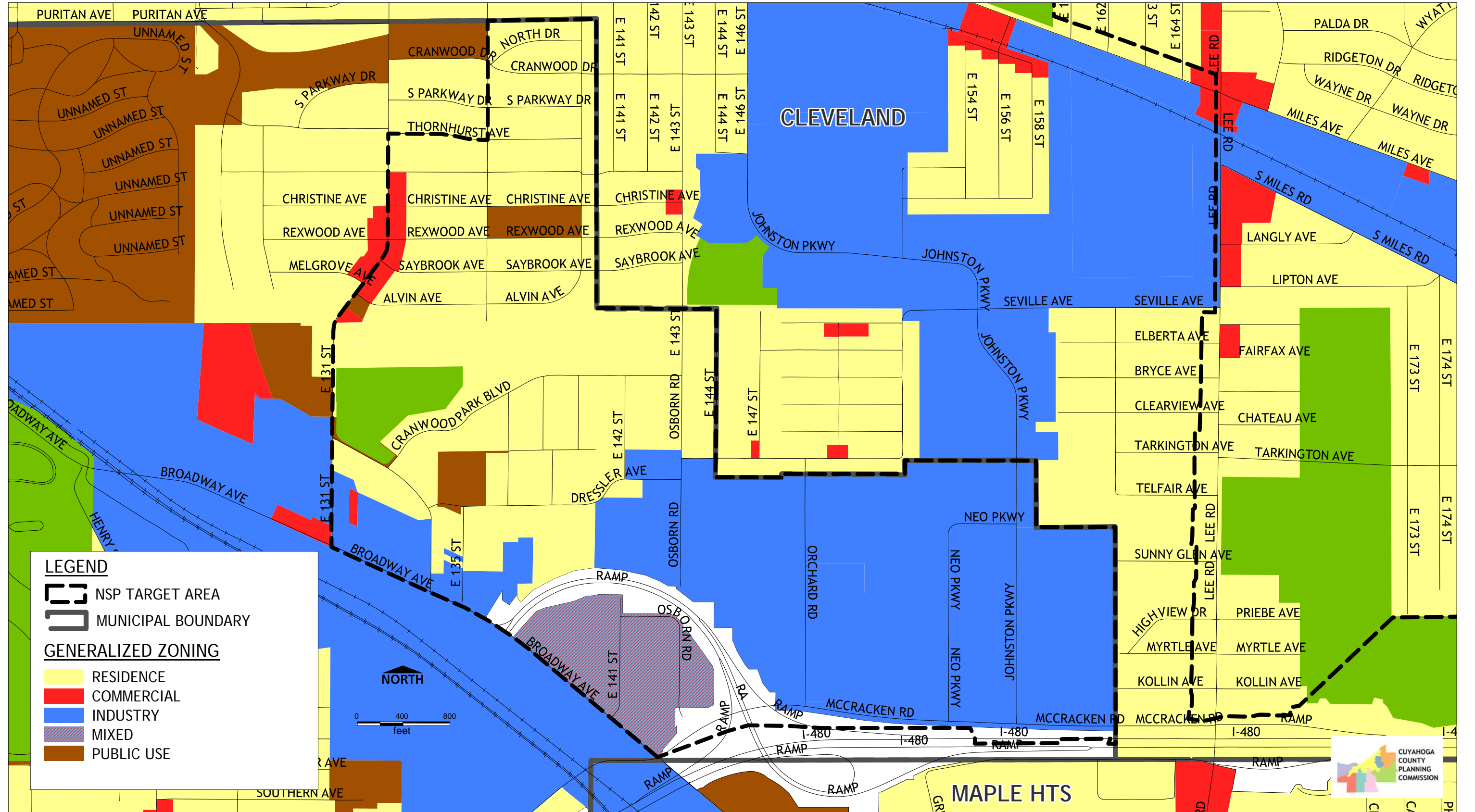
Generalized Land Use



Sources:
 Land Use and Zoning: Cuyahoga County Auditor, Appraisal Department, 2009.
 Aerial Photo: National Agricultural Imagery Program, 2009
 Historic Places: National Park Service, Cuyahoga County Planning Commission.

NSP II Target Area: Garfield Heights Tract 1547.00

Generalized Zoning



Sources:
 Land Use and Zoning: Cuyahoga County Auditor, Appraisal Department, 2009.
 Aerial Photo: National Agricultural Imagery Program, 2009
 Historic Places: National Park Service, Cuyahoga County Planning Commission.

